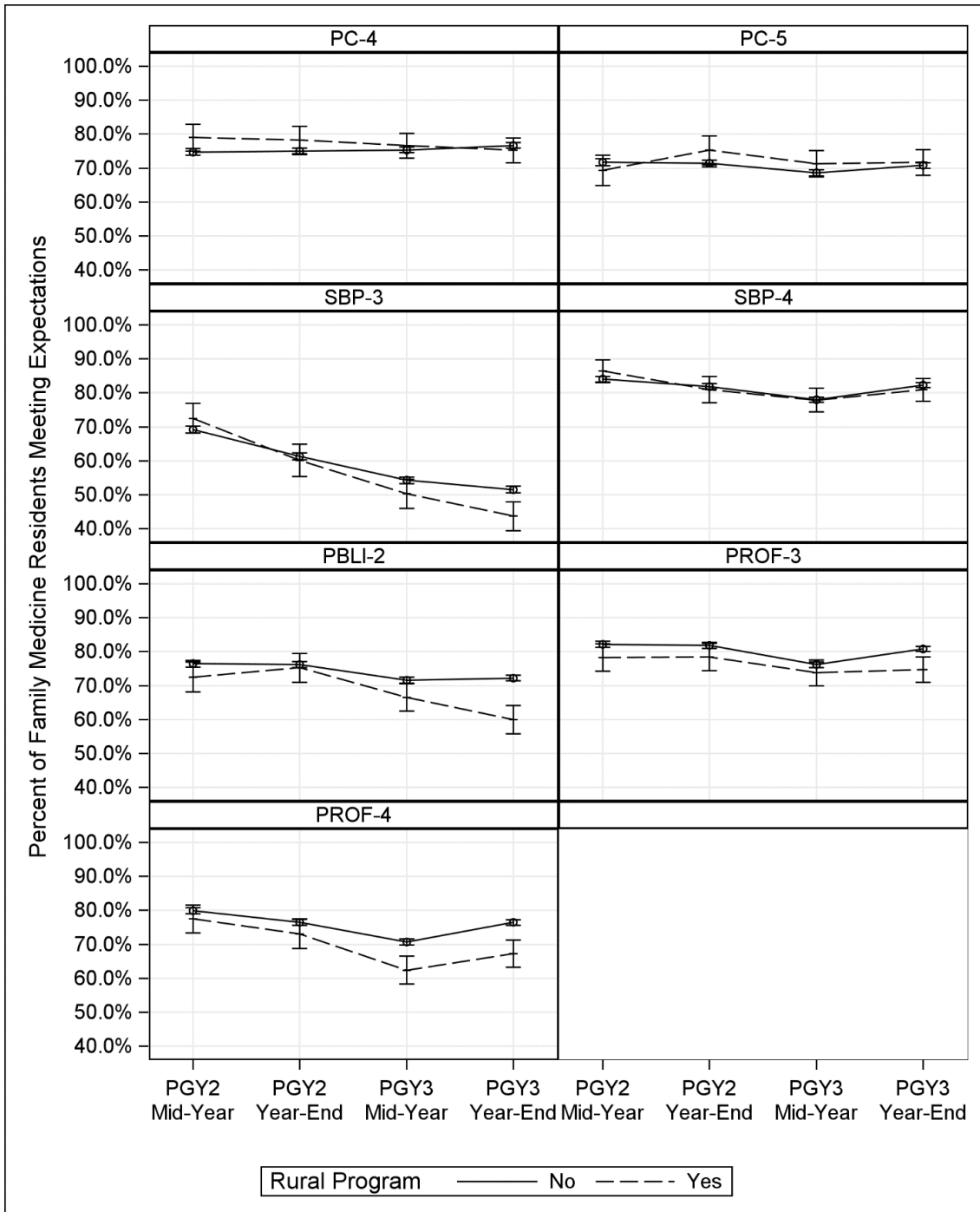


Family Medicine

THE OFFICIAL JOURNAL OF THE SOCIETY OF TEACHERS OF FAMILY MEDICINE

Supplemental Figure 2: Percentage of Family Medicine Residents Meeting Expectations on Specific Milestones Ratings Hypothesized to Differ by Residency Type in PGY2 and PGY3 for Rural and non-Rural Programs



PC, Patient Care; and SBP, Systems Based Practice, PBLI, Practice-Based Learning and Improvement, PROF, Professionalism;

PC-4 Partners with the patient to address issues of ongoing signs, symptoms, or health concerns that remain over time without clear diagnosis despite evaluation and treatment, in a patient-centered, cost-effective manner

PC-5 Performs specialty-appropriate procedures to meet the health care needs of individual patients, families, and communities, and is knowledgeable about procedures performed by other specialists to guide their patients' care

SBP-3 Advocates for individual and community health

SBP-4 Coordinates team-based care

PBLI-2 Demonstrates self-directed learning

PROF-3 Demonstrates humanism and cultural proficiency

PROF-4 Maintains emotional, physical, and mental health; and pursues continual personal and professional growth